



Marble, Granite, Limestone, Travertine & Onyx

www.el-shehabstone.com



CONTENTS



- ABOUT US.
- CERTIFICATES
- FACTORY & MACHINERY
- LIMESTONES.
- MARBLE.
- GRANITE.
- HONEY ONYX.
- TRAVERTINE
- ALL CNC WORKS.
- WATERJET WORKS.
- SPECIAL DESIGNS.
- OUR PARTNERS.

ABOUT US



El-Shehab Stone is one of the major companies in the field of marble and granite in Egypt and the Middle East, because of its quarries and equipment can supply all kinds of local marble and granite with high quality levels. Also give a competitive prices to try to improve our customers in the Egyptian market to meet the demands of major projects, whether in Egypt or in the world.

Our Products are Marble, Granite, Limestone, Travertine and Onyx form our Egyptian materials. We offer slabs, tiles with different sizes and cut to size in multiple final finishes as; Polished – Honed - Tumbled – Flamed – Acid – Leather - French pattern – Mosaic – Split Face Mosaic – Split Face – Waterjet designs – Crafting and Carving works -Pebbles tumbled of marble and granite – Interlock and other finishes of marble and granite.

We also import the best types of marble and granite from all over the world

From the reality of the statement of financial position, the size of the investment for our company is about 44 Millions Egyptian pounds. Egyptian pounds at the level of the domestic market and overseas market such as; Turkey, India, Spain, Italy, Greece and other countries. The company owns the latest techniques and technology in the field of processing and finishing marble and granite, to give a high quality product Previous business At the global level, our company exported marble and granite for most countries of the world, for example (Italy - Spain - America - Greece - Portugal - Brazil – Austria- Australia – United Kingdom- Gulf Countries and many others-) -

CERTIFICATES

SINFINITY
CERTIFICATIONS - INSPECTIONS - TRAINING

Certificate

INFINITY CERT INTERNATIONAL LTD. CERTIFY THAT
THE QUALITY MANAGEMENT SYSTEM OF

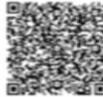
HAS BEEN ASSESSED AND FOUND TO BE IN CONFORMANCE TO THE FOLLOWING STANDARD:

ISO 9001 : 2015
FOR THE FOLLOWING ACTIVITIES



THIS CERTIFICATION WAS CONDUCTED IN ACCORDANCE WITH THE INFINITY CERT INTERNATIONAL
AUDITING AND CERTIFICATION PROCEDURES AND IS SUBJECT TO REGULAR SURVEILLANCE AUDITS.

THIS CERTIFICATE IS THE PROPERTY OF INFINITY CERT INTERNATIONAL, AND SHALL BE RETURNED IMMEDIATELY WHEN DEMANDED.



INFINITY CERT INTERNATIONAL LTD (CI)
71-75 SHELDON STREET, COVENT GARDEN,
LONDON WC2H 9JQ, UNITED KINGDOM.
PHONE: (+44) 203 - 769 - 6651
COMPANY NO.: 12950003
E-MAIL: INFO@INFINITYCERT.COM
WEBSITE: WWW.INFINITYCERT.COM

John Oliver

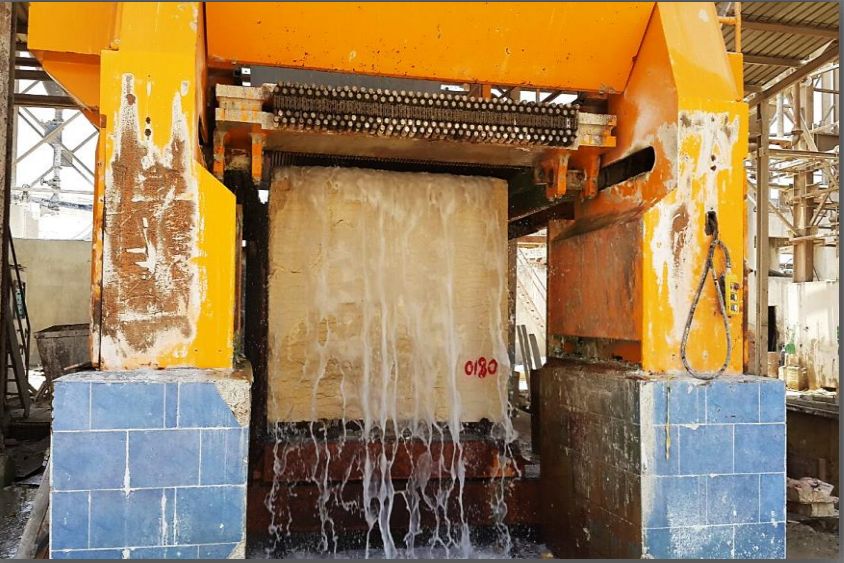
CERTIFICATION BODY AT CI
UNITED KINGDOM. 12950003

TO VERIFY THE VALIDITY OF THIS CERTIFICATE PLEASE VISIT WWW.INFINITYCERT.COM

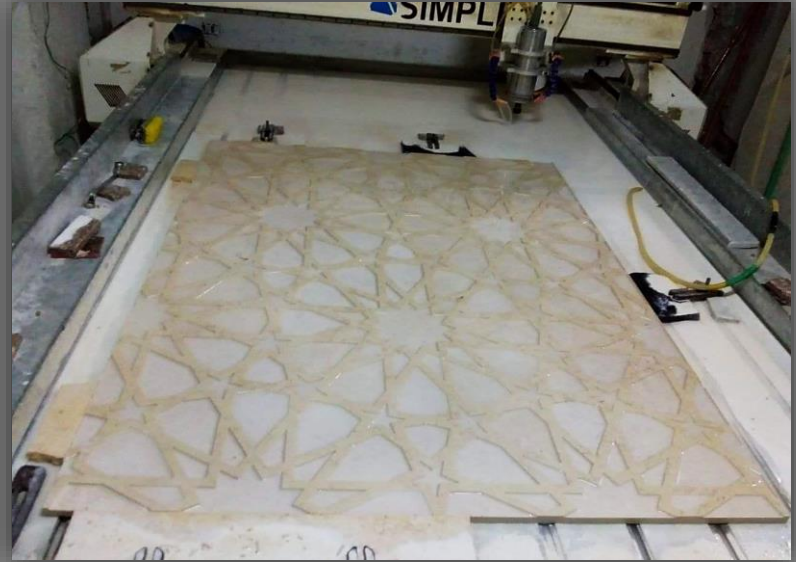


CERTIFICATES

FACTORY



MACHINERY



MATERIALS



L I M E S T O N E



L I M E S T O N E



GALALA CREAM

L I M E S T O N E



Galala cream French pattern



Galala cream tumbled



Galala cream push hammer.



Galala medium brushed



GALALA CREAM



Galala French pattern



Galala cream honed



Galala pool sandblasted acid



Galala cream stairs

L I M E S T O N E



BRONZE



Bronze tumbled



Bronze tumbled



Bronze polished

L I M E S T O N E



BRONZE



Bronze tumbled



Bronze sand acid tumbled

L I M E S T O N E



BRONZE



Bronze tumbled



Bronze polished



Bronze honed



Bronze honed

L I M E S T O N E



SUNNY MENIA

L I M E S T O N E



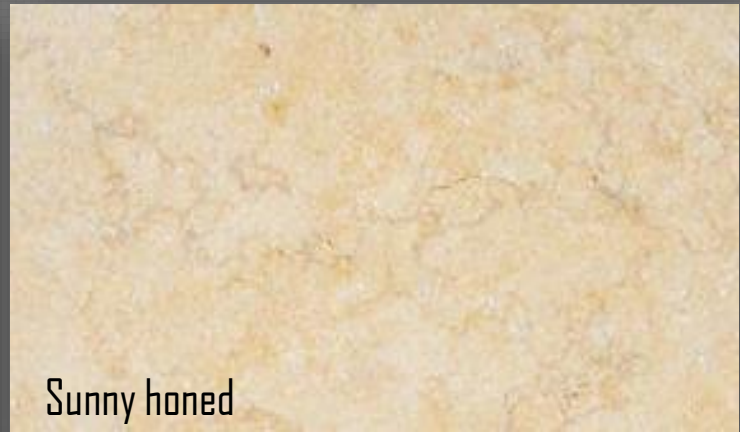
Sunny pool coping



Sunny polished



Sunny honed tumbled



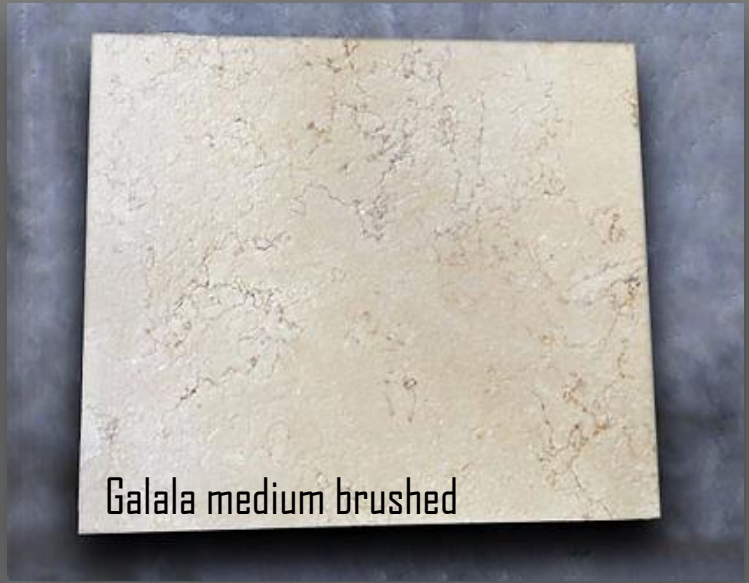
Sunny honed



Residential



GALALA LIGHT



Galala medium brushed



Galala light tumbled



Galala light sandblasted

L I M E S T O N E



SUNNY GOLD



Sunny gold brushed



Sunny gold antic



Sunny gold polished

L I M E S T O N E



Residential



SELVIA MENIA



Selvia Light



Selvia Medium

L
I
M
E
S
T
O
N
E



GALALA LIGHT



L
I
M
E
S
T
O
N
E

WWW.EL-SHEHABSTONE.COM



Galala First Commercial

L I M E S T O N E



SUNNY LIGHT



Sunny Light

L
I
M
E
S
T
O
N
E



GALALA CLASSIC



L
I
M
E
S
T
O
N
E

WWW.EL-SHEHABSTONE.COM



GALALA CREAM



L I M E S T O N E

WWW.EL-SHEHABSTONE.COM



MARBLE



MARBLE



SINAI PEARL LIGHT

MARBLE



Sinai Pearl sandblasted tumbled



Sinai Pearl pavers



Sinai Pearl polished



SINAI PEARL DARK

MARBLE



Sinai pearl grey honed tumbled.



Sinai pearl grey tumbled in French pattern.



Sinai pearl grey tumbled



SINAI PEARL LIGHT

Sinai Pearl

MARBLE



MILLY GREY



MARBLE



GRANITE



GRANITE

WWW.EL-SHEHABSTONE.COM



BLACK ASWAN

BLACK ASWAN GRANITE

COMPRESSIVE STRENGTH (PSI)	29600
TENSI STRENGTH (PSI)	4700
ABRASION RESISTANCE	51.9
DENSITY (KG/M3)	2.854
WATER ABSORPTION %	0.03 %
MODULUS OF RUPTURE (PSI)	4500



POLISHED | HONED | BRUSHED | FLAMED

300 X 600	800 X 800	20 MM SLAB
400 X 600	1000 X 1000	30 MM SLAB
600 X 600	600 X 1200	

GRANITE

BROWN QUSIR

BROWN QOUSAR GRANITE

COMPRESSIVE STRENGTH (PSI)	26100
TENSI STRENGTH (PSI)	2300
ABRASION RESISTANCE	48.6
DENSITY (KG/M3)	2.659
WATER ABSORPTION %	0.28 %
MODULUS OF RUPTURE (PSI)	2500



POLISHED | HONED | BRUSHED | FLAMED

300 X 600 800 X 800 20 MM SLAB

400 X 600 1000 X 1000 30 MM SLAB

600 X 600 600 X 1200

GRANITE

RED ASWAN

RED ASWAN GRANITE

COMPRESSIVE STRENGTH (PSI)	21500
TENSI STRENGTH (PSI)	2200
ABRASION RESISTANCE	43.5
DENSITY (KG/M3)	2.634
WATER ABSORPTION %	0.08 %
MODULUS OF RUPTURE (PSI)	2300



POLISHED | HONED | BRUSHED | FLAMED

300 X 600	800 X 800	20 MM SLAB
400 X 600	1000 X 1000	30 MM SLAB
600 X 600	600 X 1200	

GRANITE



GREEN VERDI



GREEN VEERDI GRANITE

COMPRESSIVE STRENGTH (PSI)	26100
TENSI STRENGTH (PSI)	2300
ABRASION RESISTANCE	48.6
DENSITY (KG/M3)	2.659
WATER ABSORPTION %	0.28 %
MODULUS OF RUPTURE (PSI)	2500

POLISHED HONED BRUSHED FLAMED		
300 X 600	800 X 800	20 MM SLAB
400 X 600	1000 X 1000	30 MM SLAB
600 X 600	600 X 1200	

GRANITE



SAFAGA WHITE

SAFAGA WHITE GRANITE



COMPRESSIVE STRENGTH (PSI)	26100
TENSI STRENGTH (PSI)	2300
ABRASION RESISTANCE	48.6
DENSITY (KG/M3)	2.659
WATER ABSORPTION %	0.28 %
MODULUS OF RUPTURE (PSI)	2500



POLISHED	HONED	BRUSHED	FLAMED
300 X 600	800 X 800	20 MM SLAB	
400 X 600	1000 X 1000	30 MM SLAB	
600 X 600	600 X 1200		

GRANITE



GRAY SHERKAH GRANITE

COMPRESSIVE STRENGTH (PSI)	26100
TENSI STRENGTH (PSI)	2300
ABRASION RESISTANCE	48.6
DENSITY (KG/M3)	2.659
WATER ABSORPTION %	0.28 %
MODULUS OF RUPTURE (PSI)	2500



POLISHED | HONED | BRUSHED | FLAMED

300 X 600	800 X 800	20 MM SLAB
400 X 600	1000 X 1000	30 MM SLAB
600 X 600	600 X 1200	

GRANITE

ROSA EL-NASR GRANITE

COMPRESSIVE STRENGTH (PSI)	23700
TENSI STRENGTH (PSI)	2200
ABRASION RESISTANCE	45.2
DENSITY (KG/M3)	2.616
WATER ABSORPTION %	0.09%
MODULUS OF RUPTURE (PSI)	2300



POLISHED | HONED | BRUSHED | FLAMED

300 X 600	800 X 800	20 MM SLAB
400 X 600	1000 X 1000	30 MM SLAB
600 X 600	600 X 1200	

GRANITE



RED FORSAN GRANITE

COMPRESSIVE STRENGTH (PSI)	20300
TENSI STRENGTH (PSI)	1900
ABRASION RESISTANCE	43.8
DENSITY (KG/M3)	2.621
WATER ABSORPTION %	0.13 %
MODULUS OF RUPTURE (PSI)	2000



POLISHED | HONED | BRUSHED | FLAMED

300 X 600	800 X 800	20 MM SLAB
400 X 600	1000 X 1000	30 MM SLAB
600 X 600	600 X 1200	

GRANITE



HALAYEB GRANITE

COMPRESSIVE STRENGTH (PSI)	26100
TENSI STRENGTH (PSI)	2300
ABRASION RESISTANCE	48.6
DENSITY (KG/M3)	2.659
WATER ABSORPTION %	0.28 %
MODULUS OF RUPTURE (PSI)	2500



POLISHED | HONED | BRUSHED | FLAMED

300 X 600 800 X 800 20 MM SLAB

400 X 600 1000 X 1000 30 MM SLAB

600 X 600 600 X 1200

GRANITE

NEW HALAYEB

NEW HALAYEB GRANITE

COMPRESSIVE STRENGTH (PSI)	26100
TENSI STRENGTH (PSI)	2300
ABRASION RESISTANCE	48.6
DENSITY (KG/M3)	2.659
WATER ABSORPTION %	0.28 %
MODULUS OF RUPTURE (PSI)	2500



POLISHED | HONED | BRUSHED | FLAMED

300 X 600	800 X 800	20 MM SLAB
400 X 600	1000 X 1000	30 MM SLAB
600 X 600	600 X 1200	

GRANITE

FANTASTIC WHITE

WHITE FANTASTIC GRANITE



COMPRESSIVE STRENGTH (PSI)	26100
TENSI STRENGTH (PSI)	2300
ABRASION RESISTANCE	48.6
DENSITY (KG/M3)	2.659
WATER ABSORPTION %	0.28 %
MODULUS OF RUPTURE (PSI)	2500



POLISHED HONED BRUSHED FLAMED	
300 X 600	800 X 800 20 MM SLAB
400 X 600	1000 X 1000 30 MM SLAB
600 X 600	600 X 1200

GRANITE



ONYX



ONYX

WWW.EL-SHEHABSTONE.COM



HONEY ONYX

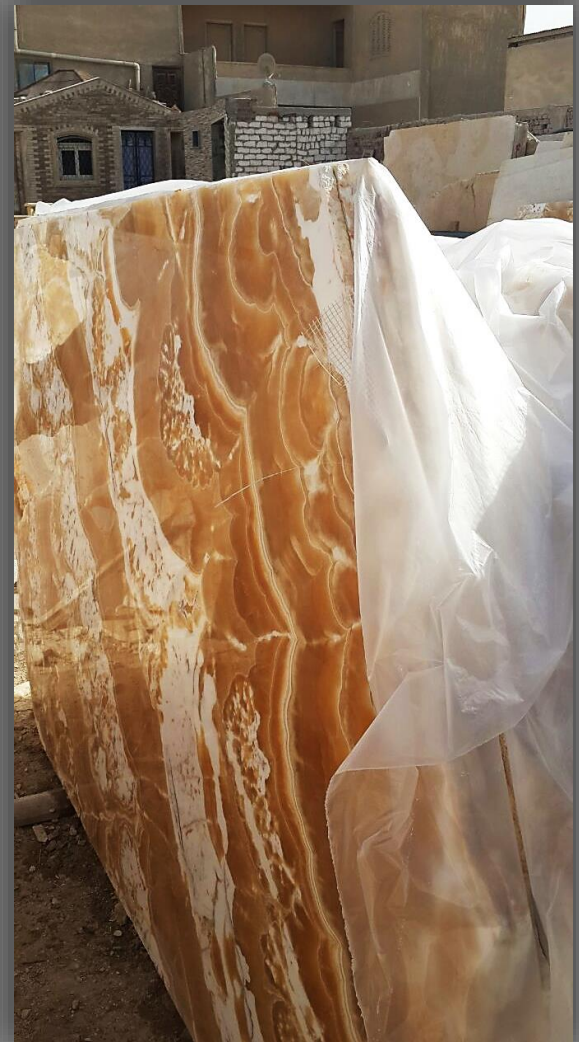


HONEY ONYX

WWW.EL-SHEHABSTONE.COM



HONEY ONYX YELLOW



HONEY ONYX YELLOW

WWW.EL-SHEHABSTONE.COM



HONEY ONYX YELLOW



HONEY ONYX YELLOW

WWW.EL-SHEHABSTONE.COM



HONEY ONYX YELLOW

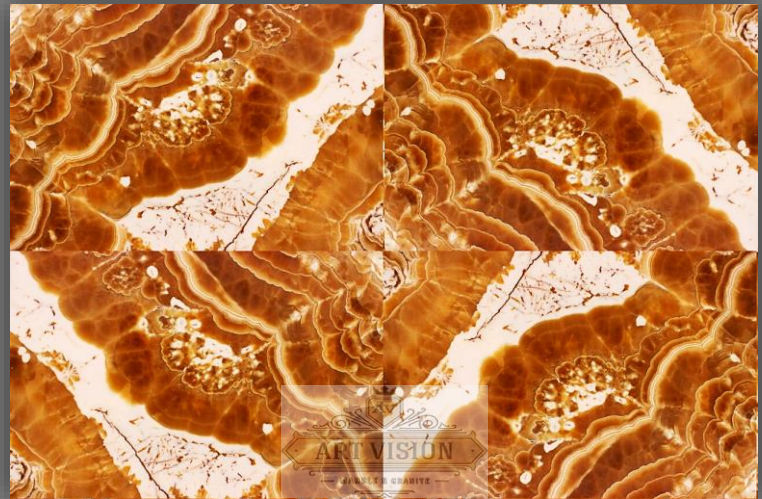


HONEY ONYX YELLOW

WWW.EL-SHEHABSTONE.COM



HONEY ONYX YELLOW



HONEY ONYX YELLOW

WWW.EL-SHEHABSTONE.COM



HONEY ONYX YELLOW



HONEY ONYX YELLOW

HONEY ONYX YELLOW



HONEY ONYX YELLOW

WWW.EL-SHEHABSTONE.COM



HONEY ONYX YELLOW



HONEY ONYX BROWN

WWW.EL-SHEHABSTONE.COM



HONEY ONYX BROWN



HONEY ONYX BROWN

WWW.EL-SHEHABSTONE.COM



HONEY ONYX BROWN



HONEY ONYX BROWN

WWW.EL-SHEHABSTONE.COM



HONEY ONYX BROWN



HONEY ONYX BROWN

WWW.EL-SHEHABSTONE.COM



TRAVERTINE

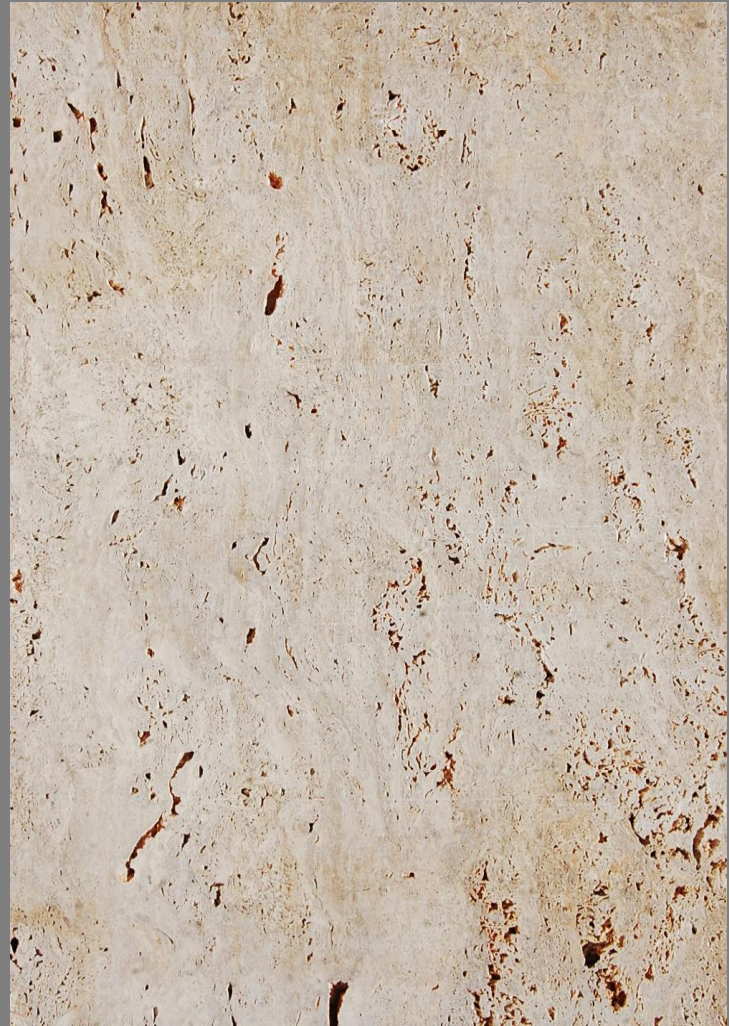


TRAVERTINE

WWW.EL-SHEHABSTONE.COM



TRAVERTINE



TRAVERTINE



TRAVERTINE



TRAVERTINE

WWW.EL-SHEHABSTONE.COM



TRAVERTINE

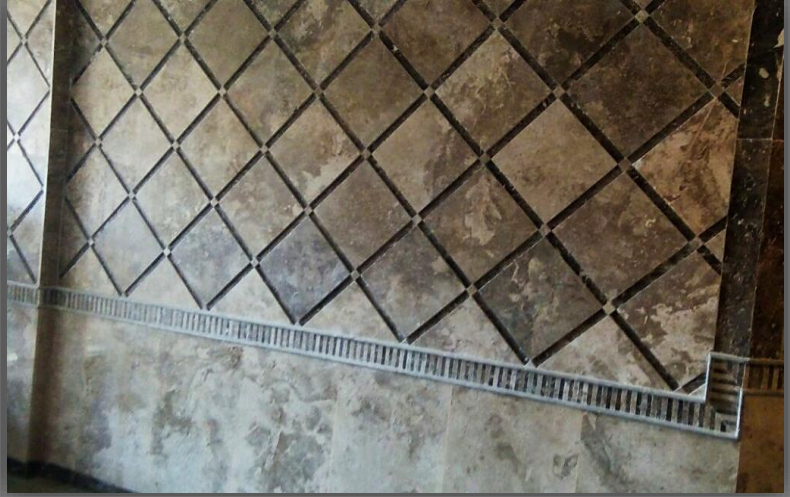


TRAVERTINE

WWW.EL-SHEHABSTONE.COM



TRAVERTINE



TRAVERTINE



CNC WORKS



CNC WORKS





WATERJET WORKS



WATERJET WORKS

WWW.EL-SHEHABSTONE.COM



WATERJET WORKS



WATERJET WORKS

WWW.EL-SHEHABSTONE.COM



Residential



SPECIAL WORKS



SPECIAL WORKS

WWW.EL-SHEHABSTONE.COM



SPECIAL WORKS



SPECIAL WORKS

WWW.EL-SHEHABSTONE.COM



SPECIAL WORKS



SPECIAL WORKS

www.artvision-marble.com



SPECIAL WORKS



SPECIAL WORKS

WWW.EL-SHEHABSTONE.COM



SPECIAL WORKS

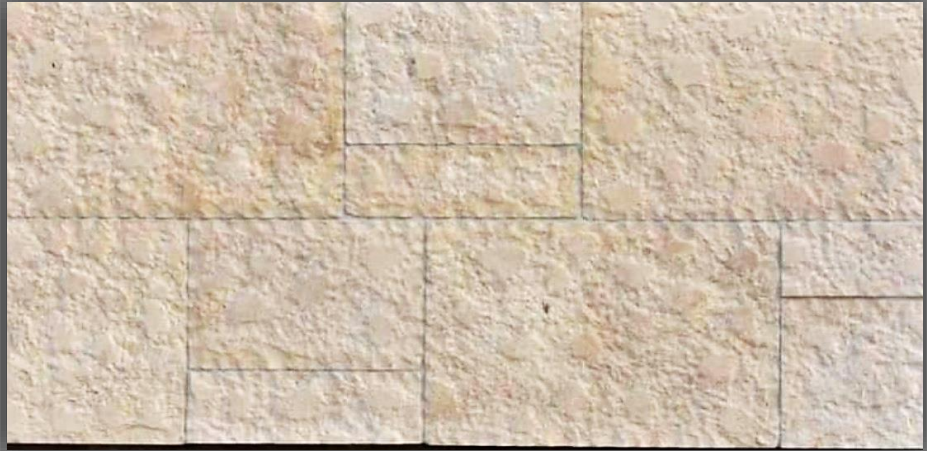


SPECIAL WORKS

WWW.EL-SHEHABSTONE.COM



SPECIAL WORKS



SPECIAL WORKS

WWW.EL-SHEHABSTONE.COM



SPECIAL WORKS

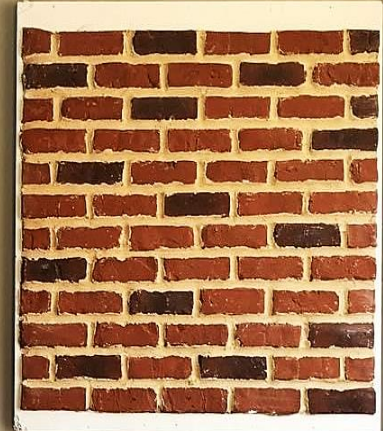
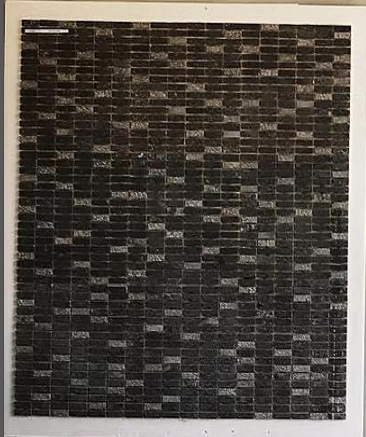
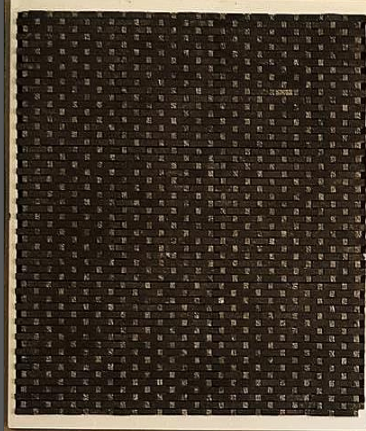
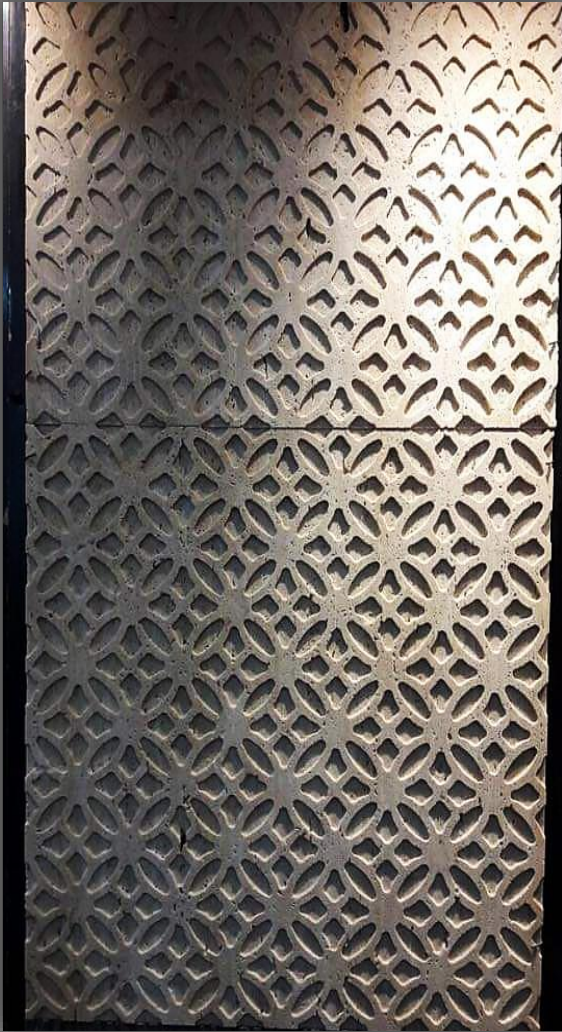


SPECIAL WORKS

WWW.EL-SHEHABSTONE.COM



SPECIAL WORKS



SPECIAL WORKS



PACKING



PACKING



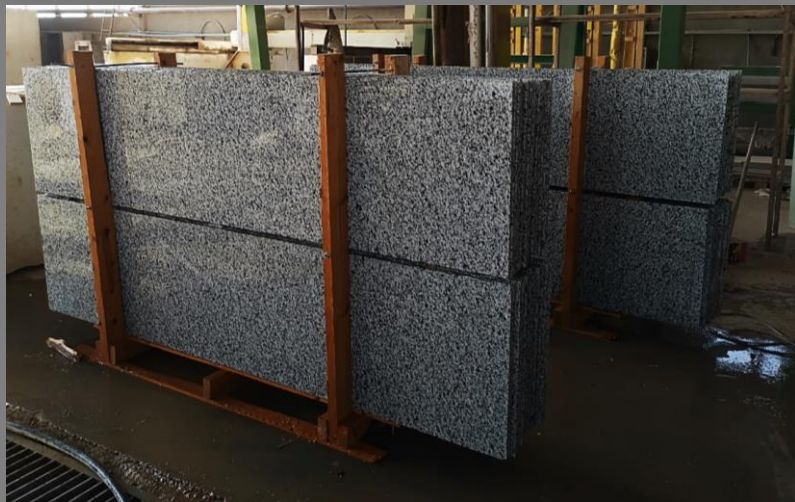
PACKING



PACKING



PACKING



PACKING



PACKING



PACKING

WWW.EL-SHEHABSTONE.COM



SAUDI ARABIA PARTNER



K.S.A PARTNER

WWW.EL-SHEHABSTONE.COM



CONTACT US



Head Office: Tower no. 98, 3rd floor. AL Amal buildings, Al Outostrad road, Tura, Cairo, Egypt.

Factory: Marble industrial zone, Shak El Soban, Tura, Cairo, Egypt.

Phone: +201001500823 / +201149988599 /+201002570009

E-mail: info@el-shehabstone.com

Web: www.el-shehabstone.com

CONTACT US

Thank you for your time and review